

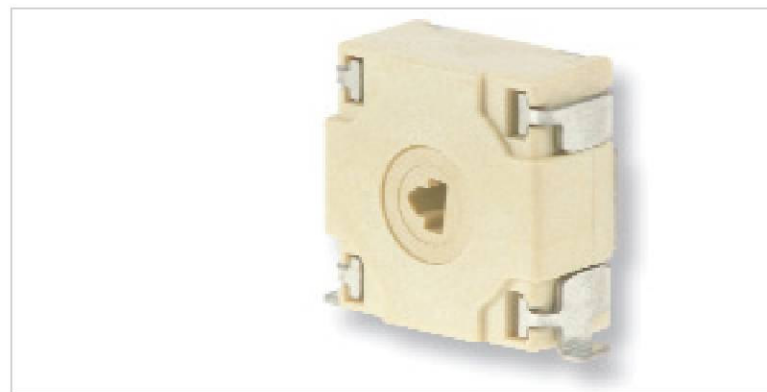
Precision in action

## Encoder Typ 510

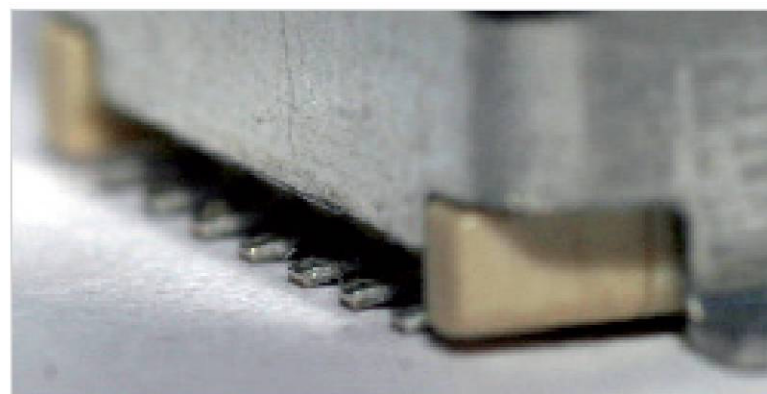
The Encoder 510 from ddm hopt+schuler features outstanding mechanical precision packaged in a compact design. It combines tried-and-tested technology with reliable functioning and a long operating life. The encoder ensures excellent operation thanks to its high number of switch positions (64 per rotor revolution), which function according to the "break before make" principle.

### Details at a glance:

- Sturdy casing
- Good haptic feedback
- Actuation from the side
- Output of 64 code configurations via 7 electrical connections
- SMD gull wing
- Terminal: 1.27 mm
- Dimensions: 6 x 12 x 12.2 mm



64 switch positions and convenient operation



SMD gull-wing type terminals